

- MOLDING PROCESS NOTES**
1. WRITING APPLICABLE MUST BE OBTAINED FROM B&W FOR ANY NON CONFORMITY OF THE PART TO THIS DRAWING
 2. LOCATIONS OF GATE, ELECTORS & PARTING LINES TO BE APPROVED IN WRITING BY B&W PRIOR TO TOOLING
 3. ALL SURFACES TO BE FREE OF SINK MARKS, FLASHING OR ANY OTHER IMPERFECTIONS
 4. ALL SHARP EDGES CORNERS RIBS MAX UNLESS STATED
 5. **DRAFT ANGLE 1.5° UNLESS STATED**
 6. DIMENSIONS FOR INSPECTION ARE INDICATED THROUGHOUT
 7. PLEASE REFER TO TOLERANCE TABLE SHOWN BELOW
 8. STRAIGHT EDGES TO BE STRAIGHT OVER WHOLE LENGTH BY TOLERANCE 0.300S X EDGE LENGTH AND NOT EXCEED 0.2 OVER ANY 25.0 DISTANCE
 9. FLAT SURFACES TO BE FLAT OVER WHOLE SURFACE BY 0.005 X LONGEST EDGE LENGTH AND NOT EXCEED 0.2 OVER ANY 25.0 SECTION
 10. CIRCULAR OR PART CIRCULAR EDGES AND FACES TO BE ROUNDED TO TOLERANCE 0.06 X RADIUS AND NOT EXCEED 0.2 OVER ANY 25.0 DISTANCE
 11. THE DRAWING NUMBER, DATE INDICATOR AND RECYCLE SYMBOLS MUST BE ADDED TO THE TOOL IN POSITIONING AGREED BY B&W
 12. THIS 2-D DRAWING IS FOR CHECKING PURPOSES ONLY UNLESS STATED
 13. ALL NOTES APPLY UNLESS OTHERWISE STATED
 14. ALL UNDIMENSIONED 3-D FEATURES ARE SUBJECT TO THE RELEVANT PROCESS TOLERANCES SHOWN ABOVE
 15. ALL DIMENSIONS SHOWN ARE + DRAFT UNLESS OTHERWISE INDICATED

PLASTIC PROCESS TOLERANCES	
NOMINAL DIMENSION	TOLERANCE
1 TO 4 MAX	±0.1
4 TO 16 MAX	±0.2
16 TO 63 MAX	±0.3
63 TO 250 MAX	±0.5
250 TO 1000 MAX	±0.8
ANGLES	
	±0.8°

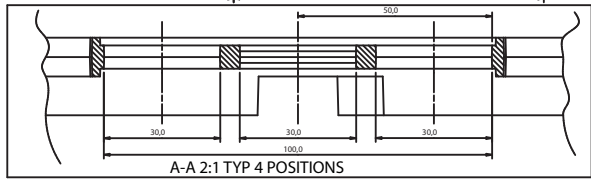
ISSUE HISTORY		
ISS	ECR/SAN NUMBER	REQ
3	PDC3307	RL
DRN	DATE	CKD
RM	13.8.09	

ISSUE DETAILS:
8-OFF 32.0 WIDE CUT-OUTS IN UPSTAND ADDED; 8-OFF SETS OF 1.9 TYP RIBS ADDED FOR DOG LANDING

ISS	ECR/SAN NUMBER	REQ
2		
DRN	DATE	CKD
RM	26.6.09	

ISSUE DETAILS:
RADS REMOVED FROM FRAME EDGE; DRAWING RELEASED

VOLUME: 146605mm³



A	B	C	D	E	G	H	J	K	L	M	N
MATERIAL BLACK H.I.P.S		FINISH FREE OF MACHINING MARKS		TITLE PMK CWM7.3 FRAME							
FIRST DRAWN BY PAUL GOCHER		COPYRIGHT © 2009 B&W GROUP LTD		DOC PART NO.		PART NO. MM06548					
DATE 22/6/09		SCALE 1:2		DRG SIZE A1		3-D DATA FILE NO E0032 -ISS- (3)					
B&W Bowers & Wilkins						2-D DRG. NO. E0032-1-1 -ISS (3)					

IF IN DOUBT ASK
ALL COMPONENTS MUST BE RoHS COMPLIANT