

eMOTUS50D

SURFACE MOUNT CABINETS

Outdoor Loudspeaker



PRODUCT OVERVIEW

eMOTUS50D is a 5" loudspeaker cabinet ready for outdoor installation. A professional and compact loudspeaker, cost-effective and with a unique design that will easily fit in a massive number of applications: theme parks, gardens, nature parks and urban spaces, leisure, health and sport centres, residential buildings, outdoor areas, etc. Available in black and white colour.

KEY FEATURES

- 2-way cabinet, 5" woofer and 1" tweeter
- 40WRMS @ 8Ω
- Power selector: 3,75 / 7,5/ 15 / 30W @ 100V & 8Ω position
- Outdoor design
- IP65 rated
- Back rubber cover for connections
- Includes wall bracket and security steel cable
- Available in black and white colour

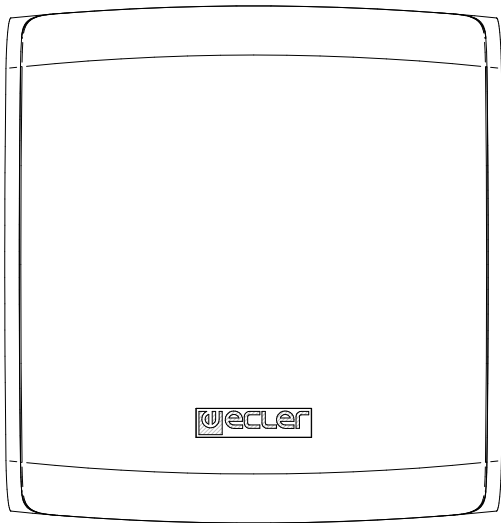
APPLICATIONS

- Theme parks
- Gardens, nature parks and urban spaces
- Leisure centers
- Health and sport centers
- Museums
- Residential buildings, outdoor areas

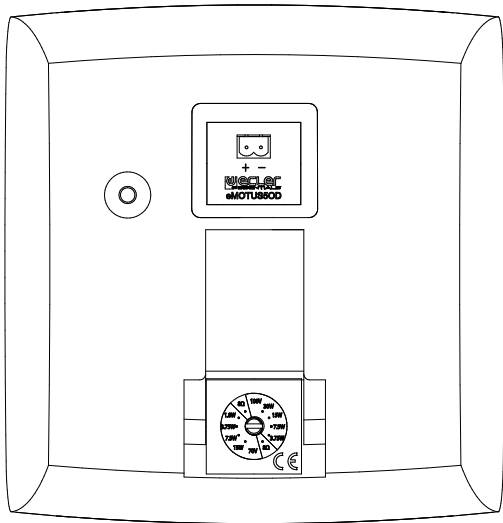
TECHNICAL DATA

| eMOTUS50D | |
|----------------------------|----------------------------------------------------------------------------|
| Power | 40 WRMS / 80 W Program |
| Impedance | 8 Ω / 100V |
| Power selector | 30W / 15W / 7.5W / 3.75W & 8Ω |
| Frequency response (±10dB) | 85Hz – 20kHz |
| Sensitivity 1W/1m | 88dB |
| Construction | Aluminum grill, ABS cabinet |
| Dimensions (WxDxH) | 173x181x180mm - Not including brackets; 173x248x180mm - Including brackets |
| Weight | 2,4 kg – Not including accessories; 2,7 kg – Including accessories |

MECHANICAL DIAGRAMS

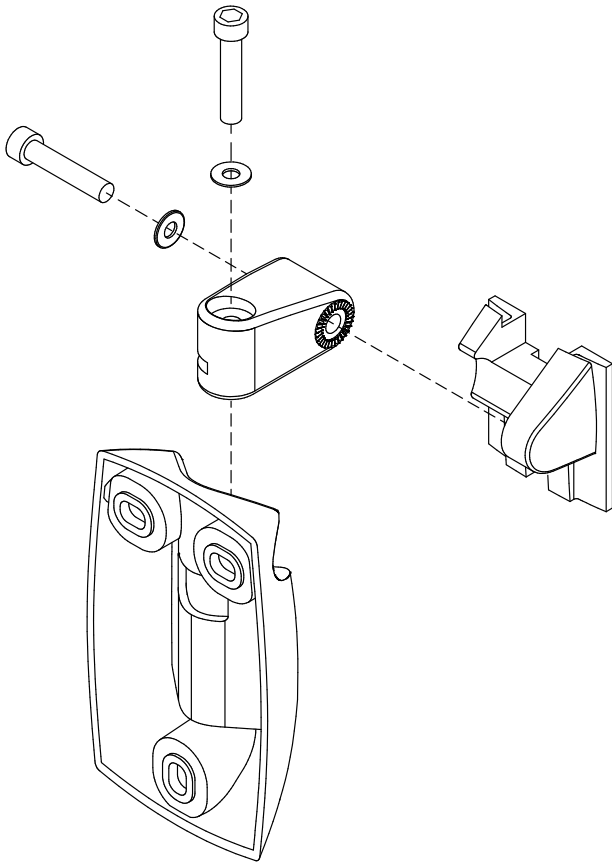


FRONT

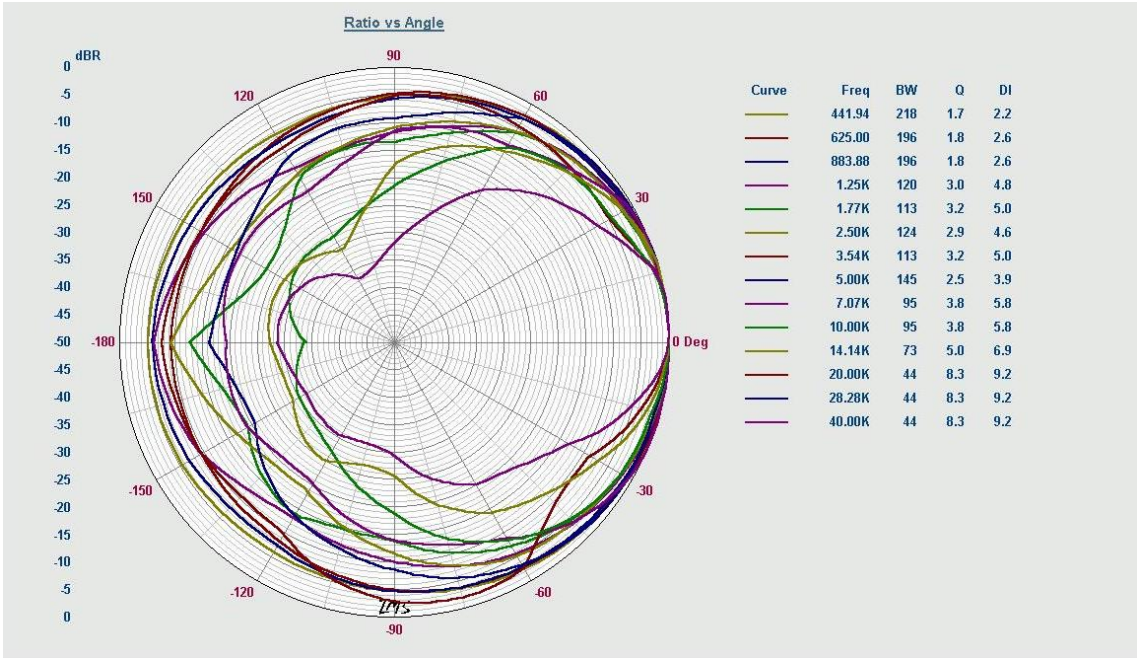


REAR

WALL SUPPORT MOUNTING DIAGRAM



POLAR DIAGRAMS



FREQUENCY RESPONSE

